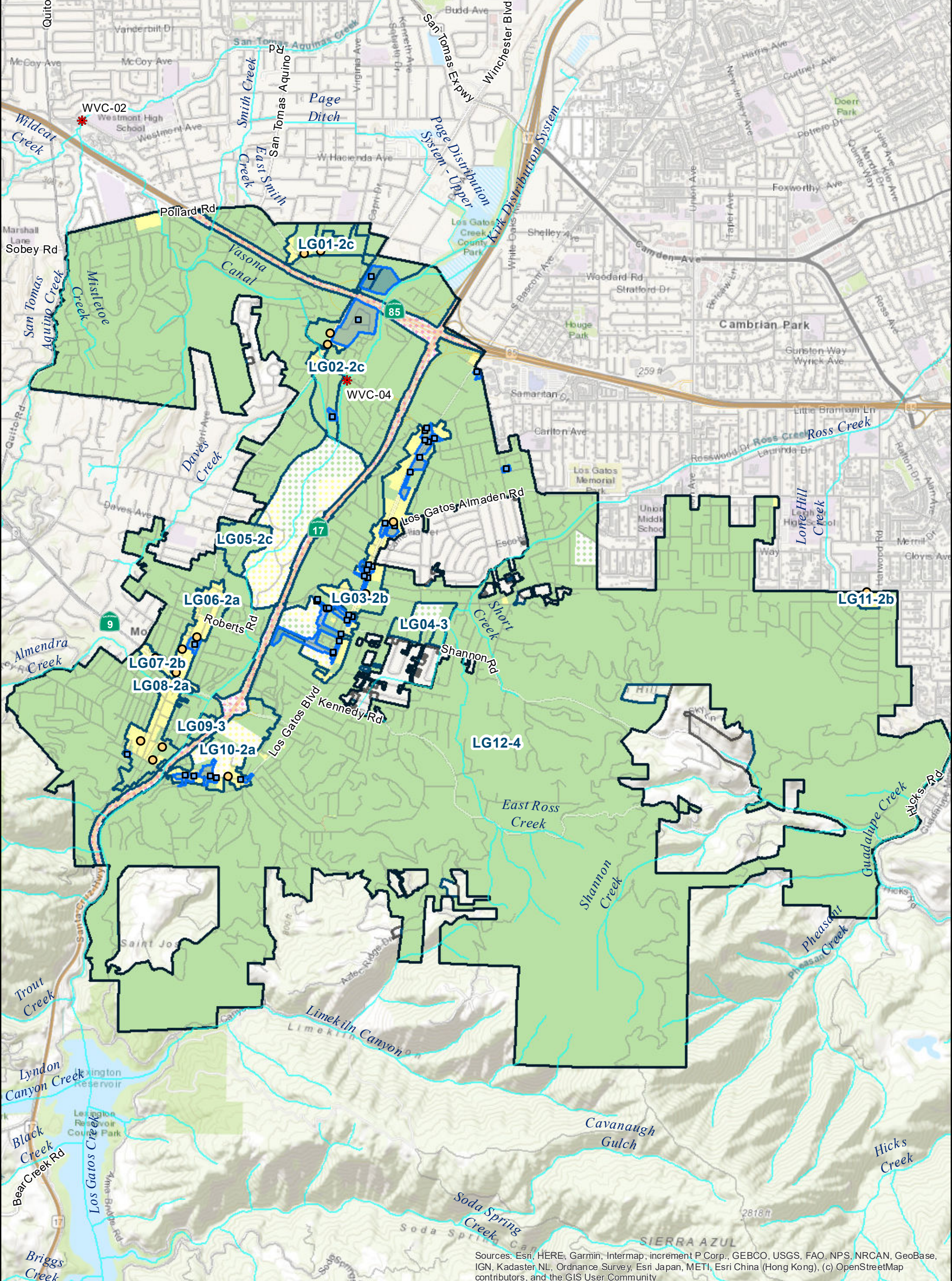


Town of Los Gatos - Trash Generation Map



Sources: Esri, HERE, Garmin, Intermap, increment P Corp., GEBCO, USGS, FAO, NPS, NRCAN, GeoBase, IGN, Kadaster NL, Ordnance Survey, Esri Japan, METI, Esri China (Hong Kong), (c) OpenStreetMap contributors, and the GIS User Community

Trash Generation Category		On-Land Visual Assessment Site	Street
Low	Creek/Shoreline Hotspot	Full-Capture Location	Freeway
Moderate	Full Trash Capture	Non-Jurisdictional (Dot color = Generation Category)	Agency Boundary
High			Trash Management Area
Very High			Creek

0 0.275 0.55 1.1 Miles