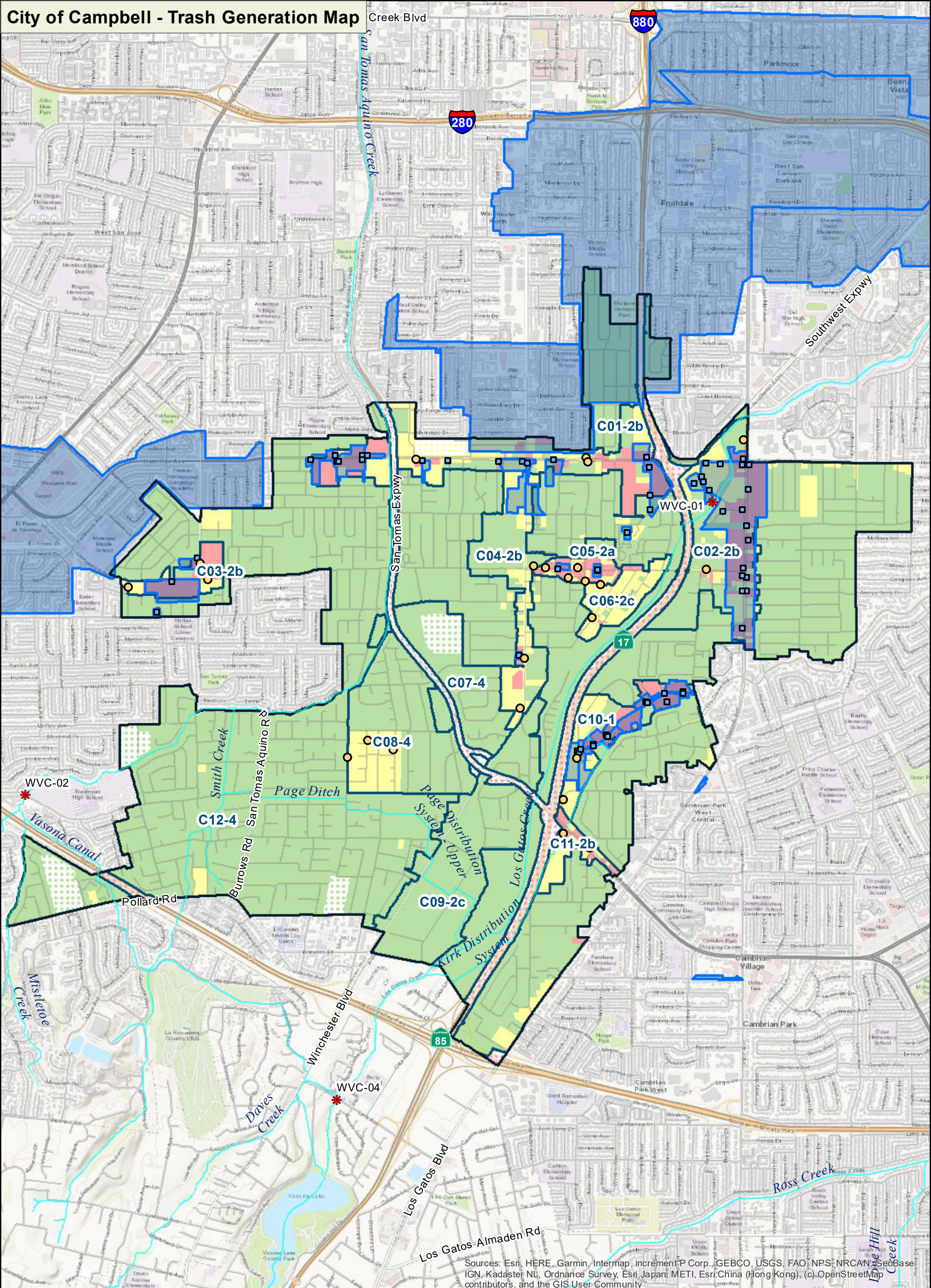


City of Campbell - Trash Generation Map



Sources: Esri, HERE, Garmin, Intermap, increment P Corp., GEBCO, USGS, FAO, NPS, NRCAN, GeoBase, IGN, Kadaster NL, Ordnance Survey, Esri, Japan, METI, Esri, China (Hong Kong), (c) OpenStreetMap contributors, and the GIS User Community

Trash Generation Category

- Low
- Moderate
- High
- Very High

- On-Land Visual Assessment Site
- Creek/Shoreline Hotspot
- Full-Capture Location
- Full Trash Capture
- Non-Jurisdictional (Dot color = Generation Category)

- Street
- Freeway
- Agency Boundary
- Trash Management Area
- Creek

